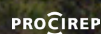
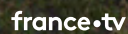


VIKINGS

THE LOST KINGDOM

A 52' & 90' 4K DOCUMENTARY FILM
DIRECTED BY **ALEXIS DE FAVITSKI**
IN COLLABORATION WITH PIERRE STINE
WRITTEN BY **ALEKSANDRA ORBECK-NILSEN** & **HUGUES DEMEUDE**

PRODUCED BY **ZED & MECHANIX FILM** FOR **FRANCE TELEVISIONS**,
IN ASSOCIATION WITH **CURIOSITY STUDIOS**, **NRK**, **SVT - SVERIGES**
TELEVISION, **VIASAT WORLD LIMITED** AND **CESKA TELEVIZE**



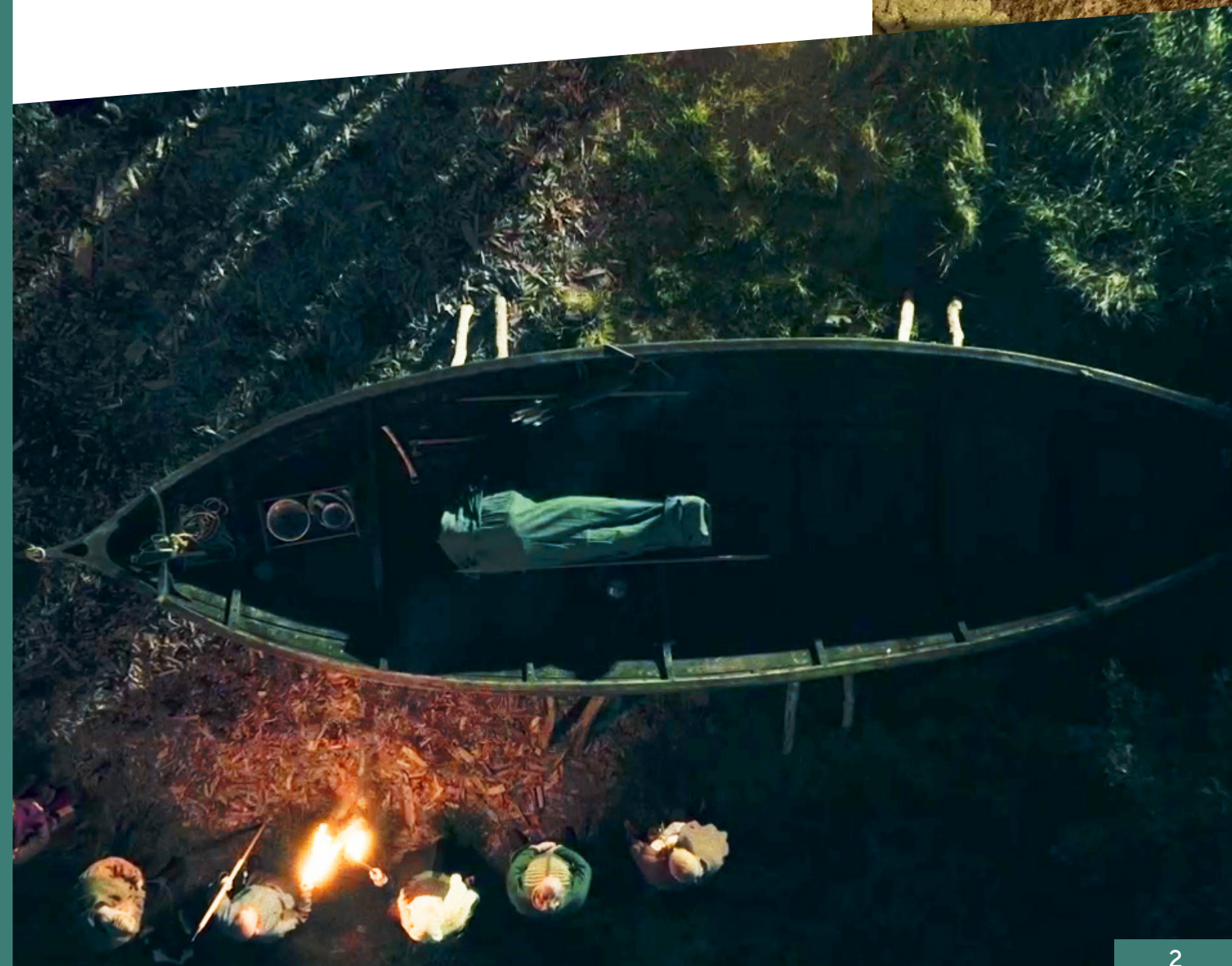
THE UNPRECEDENTED DISCOVERY OF A 1200-YEAR-OLD FUNERAL SHIP

2018, Gjeltestad, Norway. Archaeologists make the discovery of a lifetime: a 20-metre long, 1200-year-old Viking funeral ship.

Who is hiding in the grave? Is Gjeltestad one of the oldest Viking settlements? What can this coffin tell us about the daily lives, beliefs and traditions of the Vikings?

July 2020, an exceptional archaeological expedition begins. Thanks to exclusive access to this excavation, state-of-the-art technologies, cinema-worthy dramatized reenactments and with the help of great specialists of the Viking era, this unprecedented journey will bring this incredible site, its villagers, warriors and craftsmen back to life.

Both a scientific investigation and an epic historical drama, it will follow this extremely rare excavation step by step to reveal who has been hiding inside this mysterious Viking coffin for over a thousand years.



A 1000-YEAR-OLD CRIME SCENE AND STILL CLUES TO BE FOUND

VIKINGS WERE GREAT WARRIORS

THE VIKINGS RULED NORTHERN EUROPE
FOR NEARLY 250 YEARS

THEY WERE EXCEPTIONAL WARRIORS
AND SEAFARERS

THEIR KINGS JOURNEYED TO THE AFTERLIFE
ABOARD REVERED VESSELS TO REACH VALHALLA

VIKINGS' COMPLEX BURIAL RITES
REMAIN SHROUDED IN MYSTERY

BUT SOME MYSTERIES REMAIN

AN ANCIENT VESSEL IS UNEARTHED AND
SCIENTISTS UNVEIL WHO VIKINGS REALLY WERE

WHO WAS BURIED INSIDE THIS MASSIVE SHIP

ARCHAEOLOGISTS UNCOVER ANSWERS THAT
CHANGE OUR PERCEPTION OF THE VIKINGS



MAJOR BROADCASTING PARTNERS WORLDWIDE



Interest in the Viking Age is growing, helped by fascinating archaeological discoveries, just like this one at Gjellestad. It's Norway's first Viking ship excavation in a century: a great opportunity to expand our knowledge of the vikings society and culture. Exploring the technologies behind its discovery, unveiling the meticulous archeological findings and a full-blown CGI reconstruction of the ship intertwined with reenactments and experts' interviews were key to deliver a successful documentary appealing to a wide audience.

Charlotte Tachet
Head of Distribution and Acquisitions - ZED



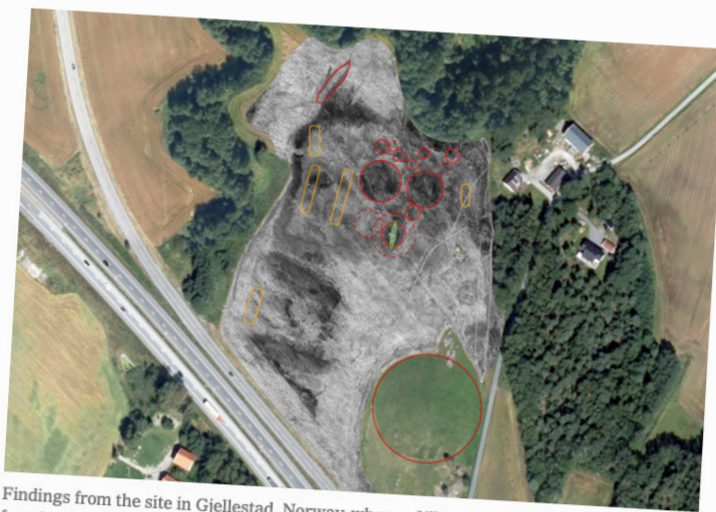
A GLOBAL COVERAGE OF THE DISCOVERY

The New York Times

Archaeologists Discover Viking Age Ship Burial in Norway

Using ground-penetrating radar, a team of archaeologists made the discovery in southeastern Norway. Once excavated, the findings could offer insight into Viking settlements.

Give this article



Findings from the site in Gjeltestad, Norway, where a Viking Age ship burial was found. The area was surveyed with ground-penetrating radar. NIKU

ARCHAEOLOGY · HISTORY
THE PAST
HERITAGE · ANCIENT WORLD

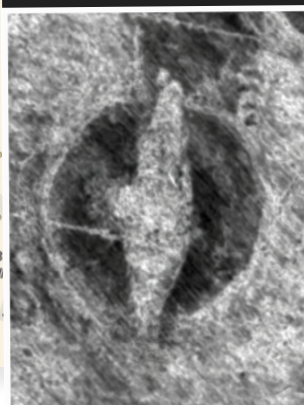
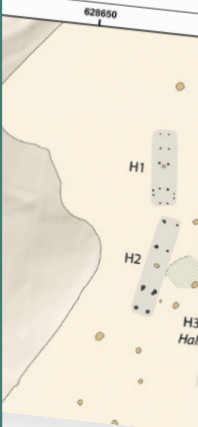
Ship shape: Viking burial found

The ship burial reflects the ultimate display of status, wealth, and connection.

WORLD ARCHAEOLOGY · JANUARY 21, 2021

A Viking ship burial has been discovered at the site of Gjeltestad in south-eastern Norway. It was first identified during a ground penetrating radar (GPR) survey, and is now being excavated by the Museum of Cultural History, Oslo.

Gjeltestad is located in Østfold, on the Viksletta Plain, a 7km² area of lowland dominated by the Jellhaugen mound, a large Iron Age funerary monument dating to the 6th century AD. GPR surveys and trial excavations in 2018 and 2019 revealed that the Mound is in fact part of a large complex, with 15 other monumental mounds and at least five buildings, all subjected to ploughing.



The Gjeltestad Ship

DIGITAL ARCHAEOLOGY

Archaeologists armed with a motorized high resolution georadar have found a Viking ship and a large number of burial mounds and longhouses in Østfold County in Norway.

The discoveries were made by the archaeologists Lars Gustavsen and Erich Nau from the Norwegian Institute for Cultural Heritage Research (NIKU) with technology developed by the Ludwig Boltzmann Institute for Archaeological Prospection and Virtual Archaeology (LBI ArchPro).

The Viking ship find is just below the topsoil, at a depth of approximately 50 cm initially buried in a burial mound. The digital data visualisations reveal a large and well-defined 50 m long ship-shaped structure. The data indicate that the lower part of the ship is still preserved. Further non-invasive investigations are planned to digitally map the unique find and the wider landscape.

The sensational find is located at Viksletta right next to the monumental Jell Mound in Østfold County, Norway. The team has discovered the traces of at least eight so far unknown burial mounds destroyed by ploughing. The georadar data also revealed 5 longhouses – some of them remarkably large.

In the research project Viking Nativity: Gjeltestad Across Borders the historical context of the ship will be investigated, and further GPR surveys will be conducted in the area.

Smithsonian
MAGAZINE

SMART NEWS

Researchers Excavating Norwegian Viking Ship Burial Find Remnants of Elite Society

Archaeologists discovered traces of a feast hall, farmhouse, temple and 13 additional burial mounds.



Nora McGreevy
Correspondent
November 12, 2020

In 2018, researchers used ground-penetrating radar to locate the remains of the Gjeltestad Viking ship. NIKU / LBI ArchPro

This summer, Norwegian archaeologists embarked on an ambitious, tricky venture last attempted in the country more than 100 years ago: the full excavation of a Viking ship burial.

In May, Norway's government dedicated roughly \$1.5 million USD toward excavating the Gjeltestad ship—a time-sensitive project, as the vessel's wooden structure is threatened by severe fungal attacks. After archaeologists set up shop in a large tent on a farm in southeastern Norway, they commenced the painstakingly slow process of digging, reported Christian Nicolai Bjørke for Norwegian broadcaster NRK.

MOST POPULAR

1. Archaeologists Discover 4,300-Year-Old Ancient Egyptian Temple
2. Archaeologists Discover 2,300-Year-Old Ancient Egyptian Temple

Layers of soil and turf tell the tale of a grand Viking ship burial

The Gjeltestad Viking ship has more or less disintegrated. But the ongoing dig to salvage the remains, the first Viking ship dig in Norway in a century, is still finding important clues to what happened here, a long time ago.

Ida Irene Bergström
JOURNALIST

Monday 30. November 2020 - 13:23

BBC

NEWS

Home | War in Ukraine | Coronavirus | Climate | Video | World | UK | Business | Tech | Science | Stories | World | Africa | Asia | Australia | Europe | Latin America | Middle East | US & Canada | US Elections 2022 | Results

Norway excavates a Viking longship fit for a king

4 December 2020



The buried longship at Gjeltestad would have looked like this famous Oseberg ship on display in Oslo

By Laurence Peter
BBC News

Pyramids, castles, palaces: symbols of power and status have taken many forms down the ages, and for the Vikings what really counted was the longship.

This month Norwegian archaeologists hope to complete their excavation of a rare, buried longship at Gjeltestad, an ancient site south-east of Oslo. It is the first such excavation in Norway for about a century.

Most of the ocean-going ship has rotted away over the centuries, but archaeologist Dr Knut Paasche believes the layout of the iron nails will still

ABOUT ZED, PRODUCER AND DISTRIBUTOR OF THE FILM



An independent producer and distributor, founded by Manuel Catteau almost 30 years ago, ZED is a key player in French documentary production, with a raft of major international broadcasters among its clients: France Télévisions, Canal+, ARTE, BBC, National Geographic, Discovery, PBS, ZDF, NHK, SBS or CuriosityStream.

Thanks to a strong team of 7 producers, ZED produces around 40 films a year, covering all genres in non-fiction: history, sciences, wildlife, investigation, current affairs and art & culture — and investing in all broadcasting platforms, whether linear, non-linear or audio (podcast). With a catalogue of 2 000 hours, ZED is also one of the major international sales companies and represents more than 130 prestigious French and foreign production firms, handling distribution of their output to broadcasters across the globe.

In the past few years, ZED has been nominated 5 times among the 10 Best French Producers of the Year, and has won three times the French Export Award that rewards the most well distributed programs abroad. In 2019, 2020, 2021 and 2022, ZED has been nominated by REALSCREEN as part of the Global 100, the annual snapshot of the best production companies working in the non-fiction industry.

Over the years, ZED has built its reputation by crafting high-end and acclaimed films, recognized in the most famous international festivals and very often garnering audience ratings. The series *Hobbies* produced for Canal+ was selected at the Cannes Film Festival (Short Film Palme d'Or Category); *Rivers Above the Canopy*, widely distributed throughout the world, won the "Best Scientific Documentary" award at the 2022 SILBERSALZ Science & Media Awards; *Kalahari, Land of Secret Alliances*, produced for France Télévisions and Blue Ant Media, won of the Gold Trophy at the Deauville Green Awards Festival and gathered 2.85 million viewers in prime-time on France 2; and more recently the film *Golden Monkeys: Braving the impossible*, produced for ARTE, CGTN and National Geographic, won the Grand Prize at the 2022 International Nature Namur Festival.





ZED

39 rue des Prairies
75020 Paris, France

www.zed.fr