

78x7'

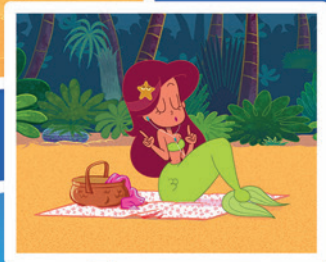
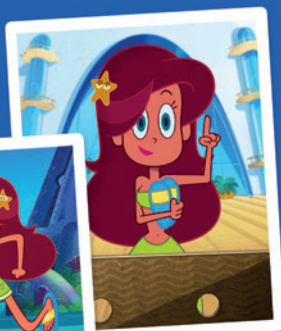
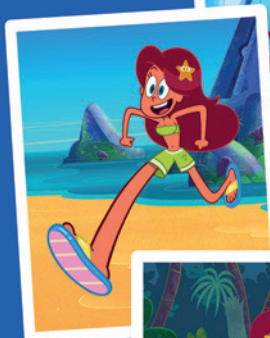
# ZIG & SHARKO

New Season!



Watch out!  
Mermaid on legs!

Zig and Sharko are back on their island, but no holiday in sight for the mischievous hyena and the muscly shark! Marina just found a magic pair of slides, which gives her legs incredible powers. She's more than thrilled! As the mermaid discovers the new possibilities two legs can offer, she's increasingly harder to catch, and to protect.



**FORMAT:** S4 - 78x7' / Total 312x7'  
**GENRE:** Non Dialogue Slapstick Comedy  
**TARGET AUDIENCE:** Kids / Family